



GAT MONTHLY MEMBERSHIP PROGRESS REPORT

Results as of: 4/30/2023

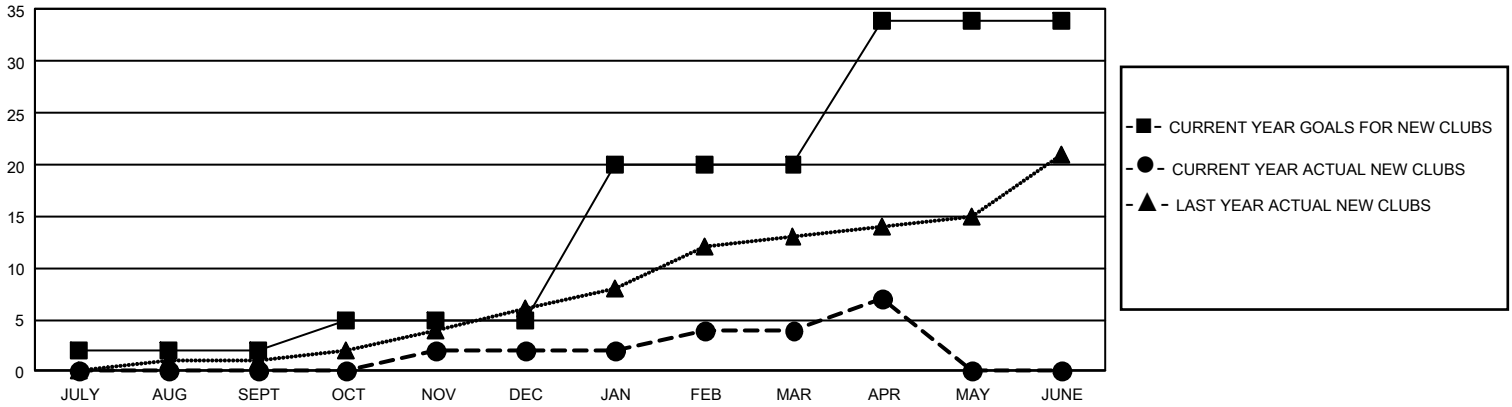
GMT Constitutional Area 4, Group E

REPORT DOES NOT INCLUDE CLUBS IN UNDISTRICTED AREAS.

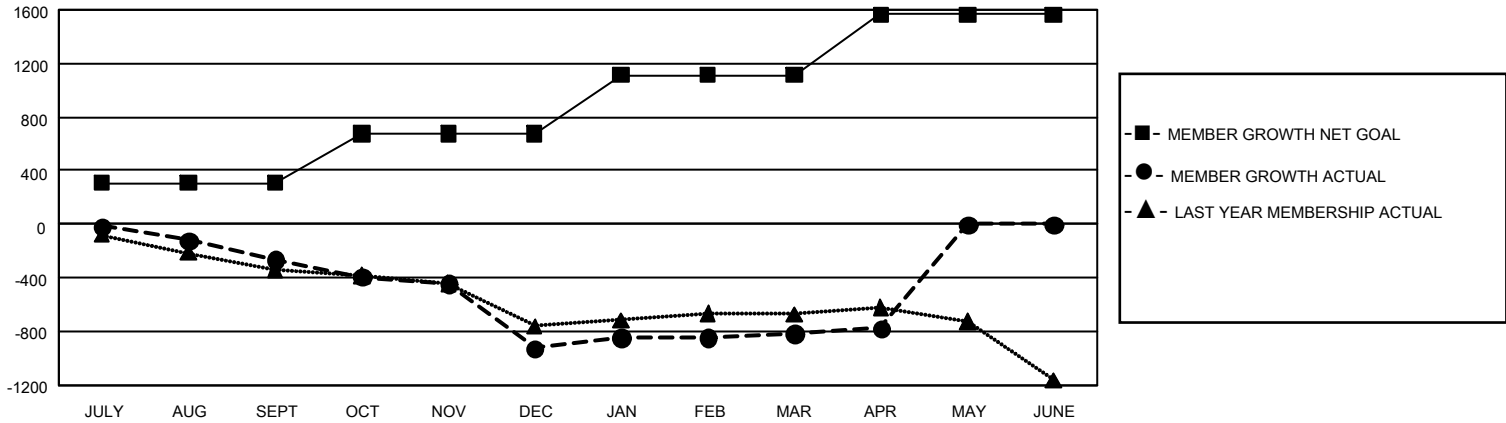
Clubs			
RESULTS FOR 2022-2023			
QUARTER	NEW CLUB GOAL	NEW CLUBS	DROPPED CLUBS
JULY/AUG/SEPT	6	0	26
OCT/NOV/DEC	9	2	9
JAN/FEB/MAR	45	2	14
APR/MAY/JUNE	42	3	1

Members			
RESULTS FOR 2022-2023			
QUARTER	MEMBER GROWTH NET GOAL	MEMBER GROWTH ACTUAL	DROPPED MEMBERS ACTUAL (including transfers)
JULY/AUG/SEPT	309	440	602
OCT/NOV/DEC	367	676	1,195
JAN/FEB/MAR	437	947	669
APR/MAY/JUNE	450	325	235

GOALS AND ACTUAL NEW CLUBS CUMULATIVE



GOALS AND ACTUAL MEMBERS CUMULATIVE



DROPPED CLUBS: 49	810 CLUBS OF 1,560 ADDED 1 OR MORE NEW MEMBERS	<u>GENDER DISTRIBUTION</u>	
		MALE	23,929 (74.16%)
<u>DROPPED MEMBERS</u>		FEMALE	8,339 (25.84%)
		NON BINARY	0 (0.00%)
DECEASED	308	PREFER NOT TO ANSWER	0 (0.00%)
CLUB CANCELLED	138	TOTAL FAMILY UNIT MEMBERS 1,440	
OTHER	2,255	FAMILY MEMBERS PAYING HALF DUES 729	
TOTAL	2,701		

[CLICK HERE FOR CUMULATIVE MEMBERSHIP DATA](#)